



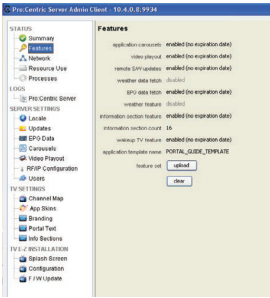
# Pro:Centric Server



## SERVER ADMIN CLIENT

An Admin Client Graphical User Interface (GUI) is provided and is remotely accessible via the Internet using VPN service and a standard web browser, to provide System Integrator administration users with a full suite of features to manage and support the Pro:Centric system, including:

- a) Item status and logs, and server settings
- b) Configuration for Channel Guide lineup
- c) Hotel branding and Billboard creation and editing
- d) Television configurations settings and software updates



For further details, refer to the Pro:Centric™ Server Admin Client User Guide, P/N: 206-4143, (also accessible on the system).

## TYPICAL FTG Pro:Centric PCS200S INSTALLATION

## PRO:CENTRIC VPN SERVER

Remote management of the PCS200S server functionality is provided via a secure, built-in VPN client that connects to the centralized VPN server. In this way, remote configuration management, remote software updates and other services are supported. Free hosting of the service is provided by LGE during the warranty period. Extended support plans are available.

## INSTALLATION REQUIREMENTS:

- Installation of the PCS200S requires the following:
  - 1U rack space in the Head-end room
  - Ethernet Connection (VPN and FTP open)
  - 1 x 110/120VAC power outlet
  - 1 coax drop to the RF combiner to feed the output of the server into the RF network

Note that no local monitor or keyboard is required for the server.

For further details on the Server installation, refer to the Installation & Setup Guide, Part No: 206-4142.

Please contact your LG sales representative for a list of compatible Pro:Centric television models.

SYSTEM SOFTWARE	Model	PCS200S		
	Software	Linux OS kernel 3.4 Globally Executable MHP(GEM) server applications		
ENVIRONMENTAL STORAGE CONDITIONS	Data Output	ASI,RF(256 or 64 QAM), 100/1000T Ethernet		
	Rear Port	ASI/RF/RF Test/TTL serial/USB 1 Port, Ethernet 2 Port		
ENVIRONMENTAL OPERATING CONDITIONS	Storage Temperature	-4° to 158° Fahrenheit (-20° to 70° Celsius)		
	Humidity	95% Non-condensing		
ELECTRICAL	DC Input	+12V DC @ 3.25 Amps Adaptor		
	RF Output Connectors (2)	75 Ohm, Type 'F'		
	RF Output Frequency Range	VHF/UHF 54-865 MHz		
	RF Output Span	Up to 8 Contiguous Channels (Typically 48-64 MHz)		
	RF Output Level	-6 dbm (+42 dbmV) Minimum, -2 dbm (+46dbmV) Typical		
	0 dbmV RF Output Level	-48.75 dbm (0dbmV) Typical		
	Frequency Accuracy	5 ppm		
	ASI Out Jack	75 ohms, BNC		
	Level at ASI Out Jack	800 mv		
	Ethernet Connector (Control Port)	10/100/1000BaseT, RJ45		
	Ethernet Connector (Feature Port)	100/1000BaseT, RJ45		
	USB Port	USB 2.0		
MODULATION SPECIFICATIONS	RS-232 Serial Audio Jack	Command Line Interface port (5V TTL)		
	Standard Constellations	ITU-T Annex B (QAM-B)		
		64-QAM, 256 QAM		
	Symbol Rate	64-QAM	6.900 Mbaud	
		64-QAM	5.360537 MBaud	
	Interleaving Standard	Fixed I=128, J=1		
		EN 300 429 V1.2.1 (DVB-C)		
	Constellations	64-QAM, 256 QAM		
64-QAM		6.900 Mbaud		
Symbol Rate	64-QAM	6.111 Mbaud		
	256-QAM	6.900 Mbaud		
	256-QAM	6.111 Mbaud		
WARRANTY	1 Year			
CERTIFICATION	Regulatory Compliance	FCC, UL, RoHS		
DIMENSIONS	Unit Dimension (WxHxD, mm)	19.0" x 1.7" x 8.5"		
	Unit Weight (Rack-only)	5.65 lbs.		
UPC CODE	7 19192 91554 1			

## REAR VIEW

